

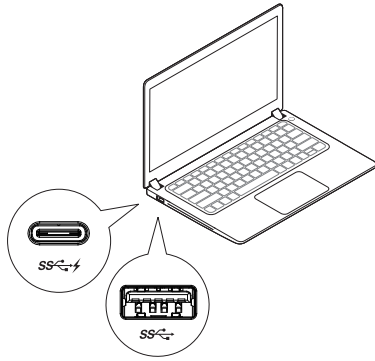
Dell™ Universal Dock

D6000

Quick Start Guide



- 1 **NOTE: Install the drivers first before connecting the Docking Station to your computer.**



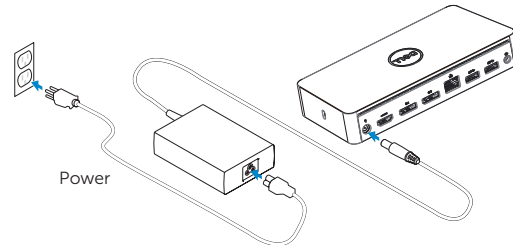
Driver download links:

- dell.com/support
- displaylink.com/downloads

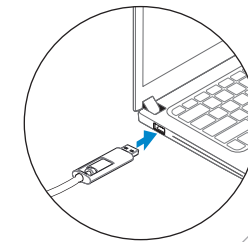
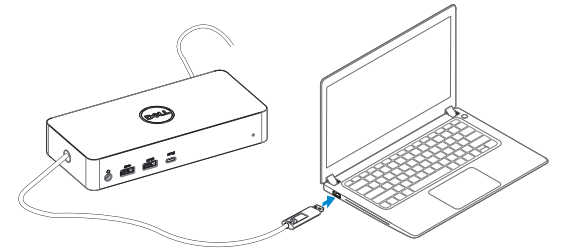
Corporate installation software package:

displaylink.com/corporateinstall

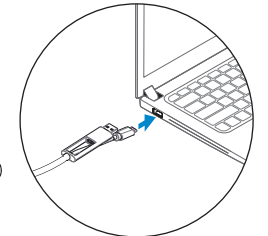
- 2



- 3 Choose USB-A or USB-C connector for laptop connection

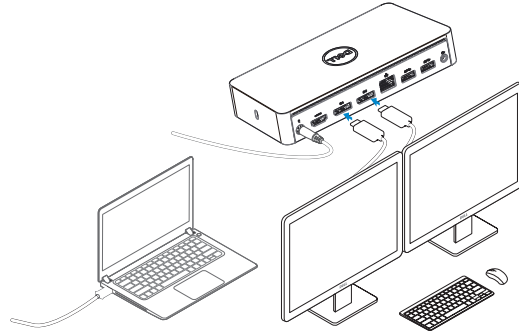


USB-A



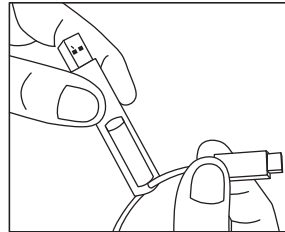
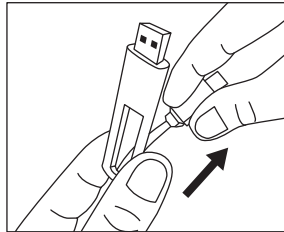
USB-C

4

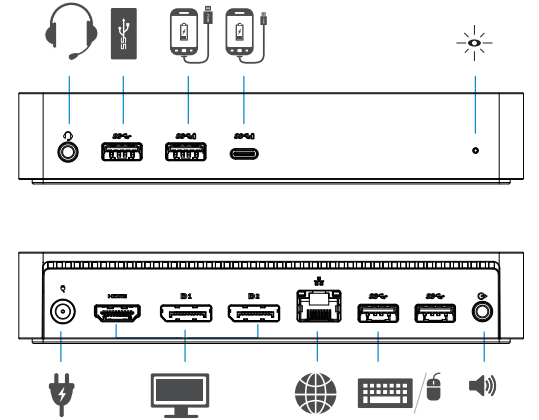


USB-C notebook supports maximum 3 displays.
 USB-A notebook supports maximum 2 displays.

How to interchange USB-C and USB-A connection



Features



dell.com/support
dell.com/contactdell
dell.com/regulatory_compliance

Regulatory model : D6000



Dell P/N : T48MD A00
 © 2017 Dell Inc.

Printed in China.
 2017-02

- NOTE: For more information, see User's Guide at dell.com/support
- NOTE: The latest drivers update can be downloaded from the DisplayLink support website at displaylink.com/support
- NOTE: For network/IT administrators, please visit this link for a corporate installation software package. (*User registration required) displaylink.com/corporateinstall